

BaltCICA

Consulting citizens/stakeholders about
climate adaptation

The case of Kalundborg



Part-financed by the European Union (European Regional Development Fund and European Neighbourhood and Partnership Instrument.)

TEKNOLOGI-RÅDET
THE DANISH BOARD OF TECHNOLOGY





Kalundborg



Kalundborg Municipality

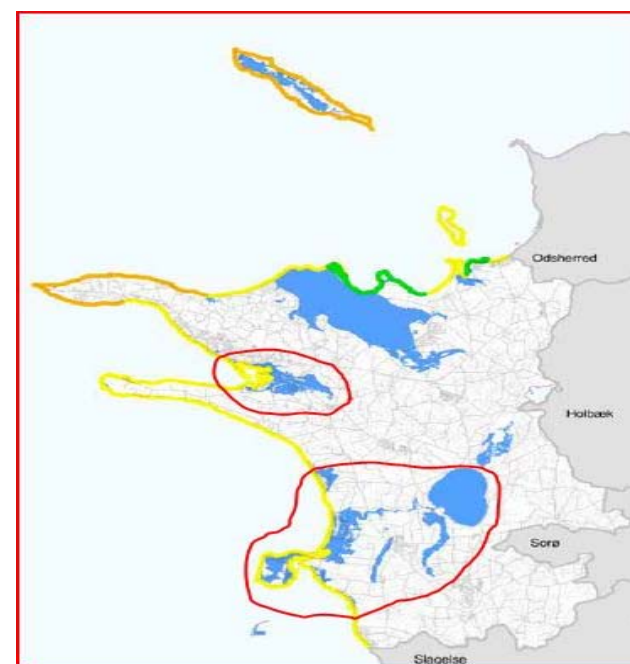
Area:	602 km ²
Population:	50.000
Population - city:	16.000
Coastline:	160 km



Part-financed by the European Union (European Regional Development Fund and European Neighbourhood and Partnership Instrument.)

Test areas

- The city center of Kalundborg – originally founded 1170 - with the modern traffic harbor and high tech industry.
- Coast-, rural- and recreational area south of Kalundborg: Tisso.



Scenario workshops

- A scenario workshop produced rough scenarios predicting the future at the end of the century based on IPCC-figures.



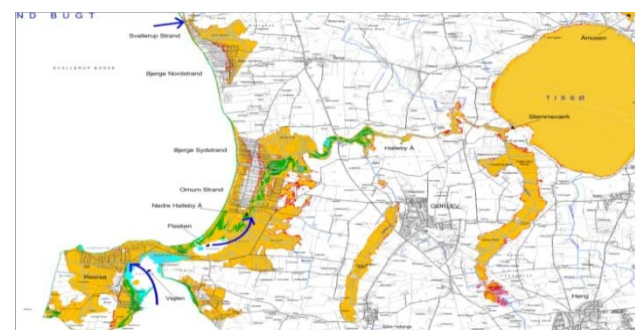
- A second workshop where the same participants designed a much detailed series of scenario plans based on realistic solutions and realistic economy.



The test areas: Kalundborg city center and Tisso

The Danish Board of Technology and the Municipality of Kalundborg outlined the consequences at different high water levels at the end of the century

1. We protect land and property intensively
2. We adapt only by protecting prioritized areas
3. We let nature rules



The proces

- The Board of Technology and Kalundborg Municipality produced a booklet about the area and expectations to the future climate.
- 20 questions to the citizens were formulated
- Who to invite? The Ministry of Internal Affairs delivered 7.000 persons chosen from age, gender, geography and education.
- 650 citizens accepted and 350 showed up

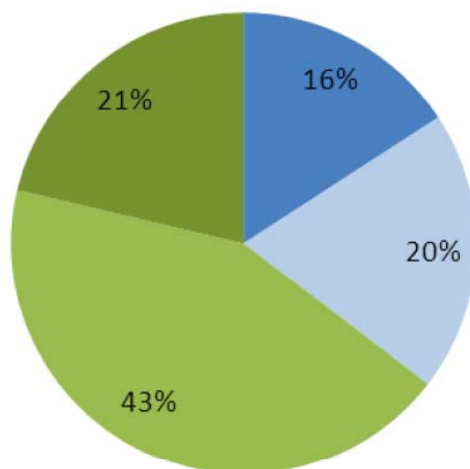
Documentary

Citizens' advise about climate change

<http://www.youtube.com/watch?v=LW1Xvfqimco&feature=youtu.be>



Part-financed by the European Union (European Regional Development Fund and European Neighbourhood and Partnership Instrument.)



- Big dike at open sea
- Big dike on land
- Phasing out vulnerable settlements
- Ongoing transformation to nature areas

How should we generally deal with climate change adaptation in Kalundborg Municipality?

One should generally wait and see and act only as problems arise or the law demands it

9,2%



One should act now and produce long-term plans, taking into account the expected climate change

90,2%



Don't know

0,6%





Part-financed by the European Union (European Regional Development Fund and European Neighbourhood and Partnership Instrument.)

TEKNOLOGI-RÅDET
THE DANISH BOARD OF TECHNOLOGY