

European Conference on Technology Assessment

Towards an assessment of Portuguese e-mobility: The Mobi-E case

Nuno Boavida, António Moniz and Manuel Laranja

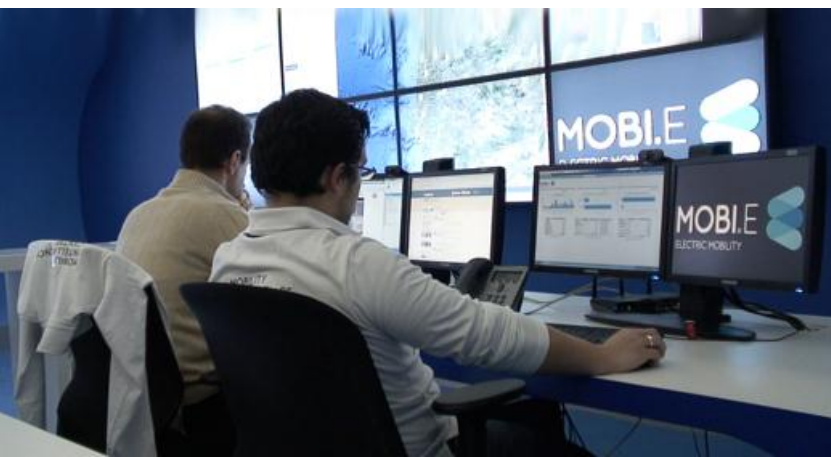
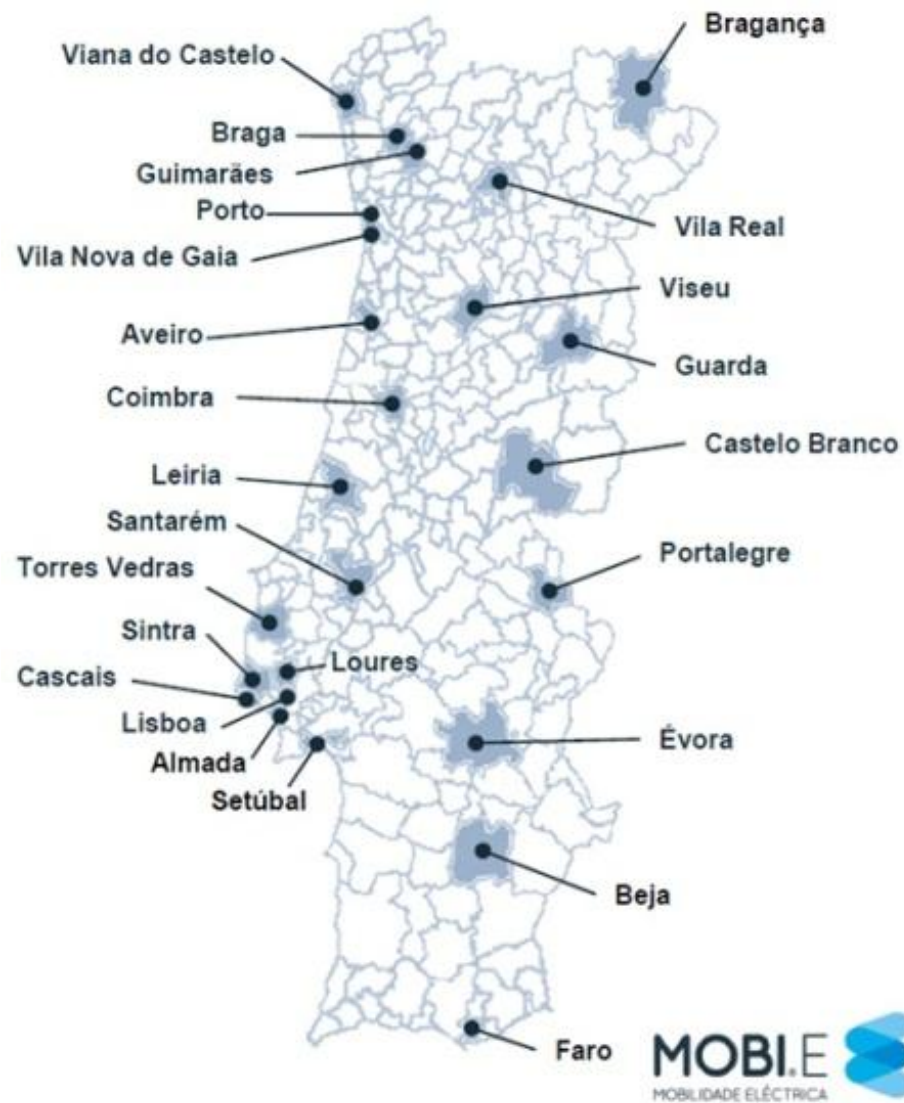
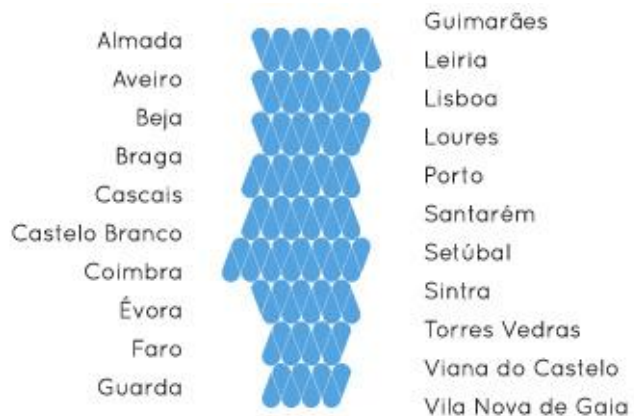
Prague, 13th of March 2013

1. Mobi-E



GetAdvice.com.au

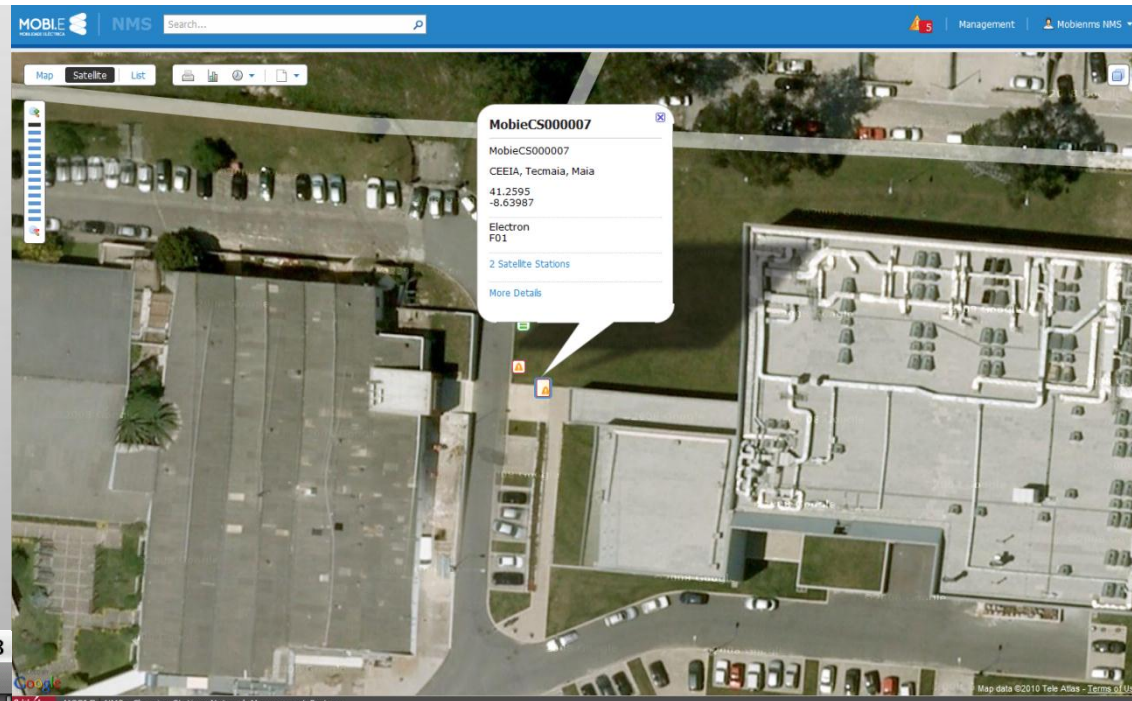
1. Mobi-E



1. Mobi-E



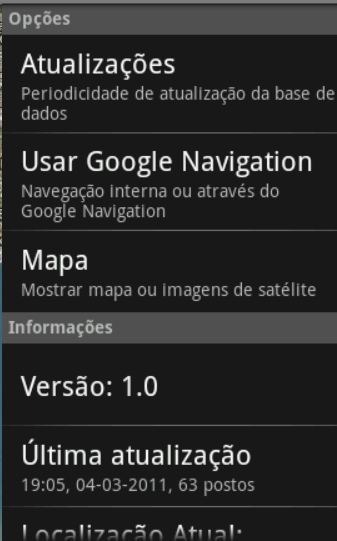
1. Mobi-E



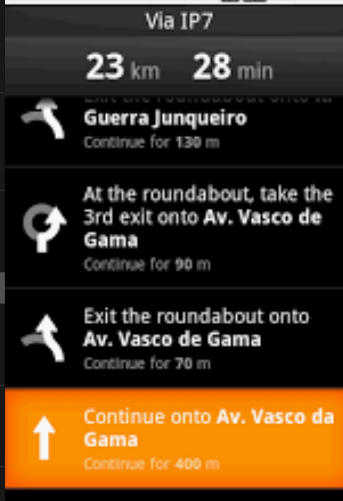
MOBI.E - Postos de Carregamento 19:12



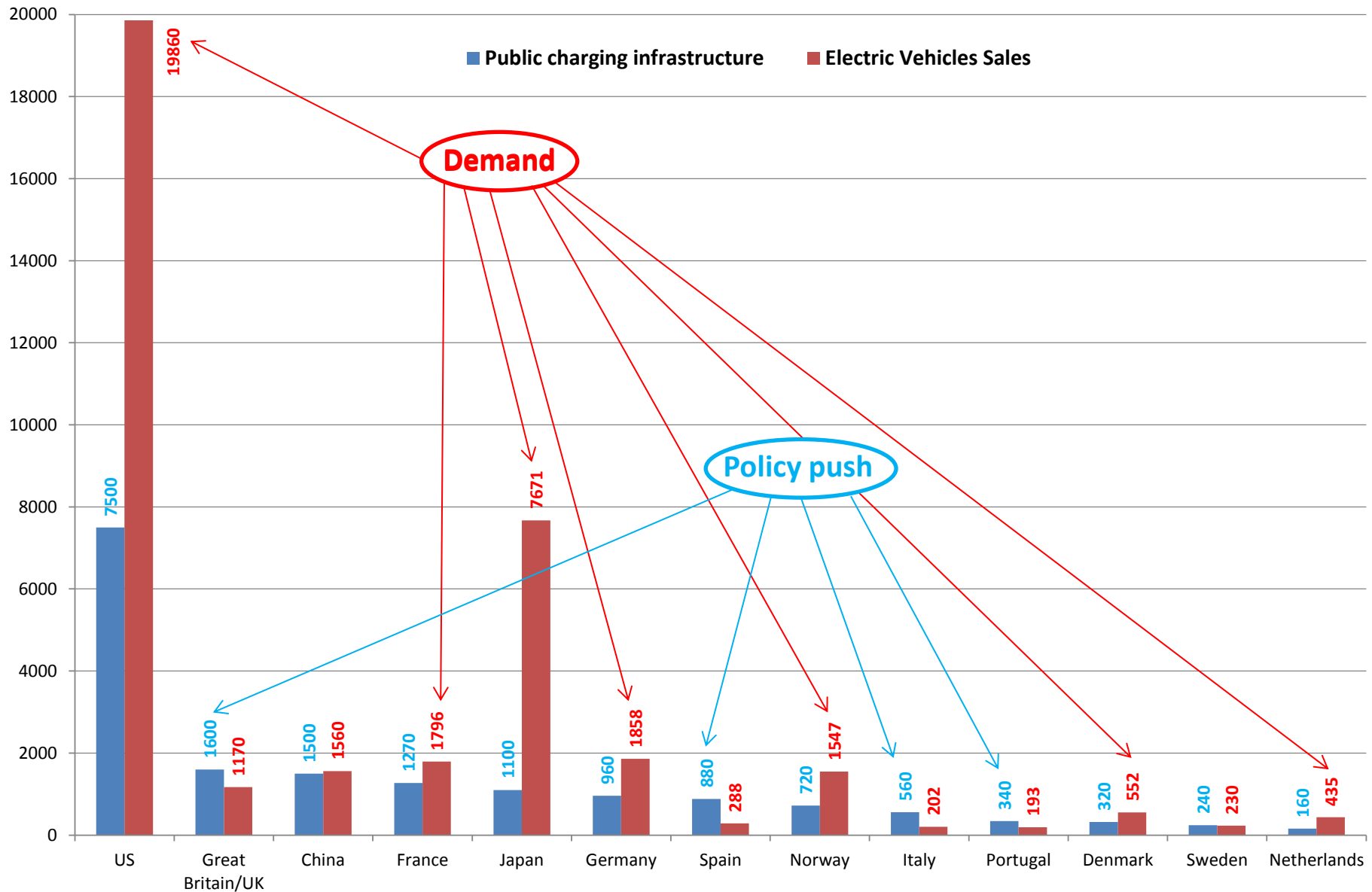
MOBI.E // Opções 19:12



MOBI.E - NMS - Charging Stations Network Management System 19:12



2. World infrastructure and sales of electric vehicles



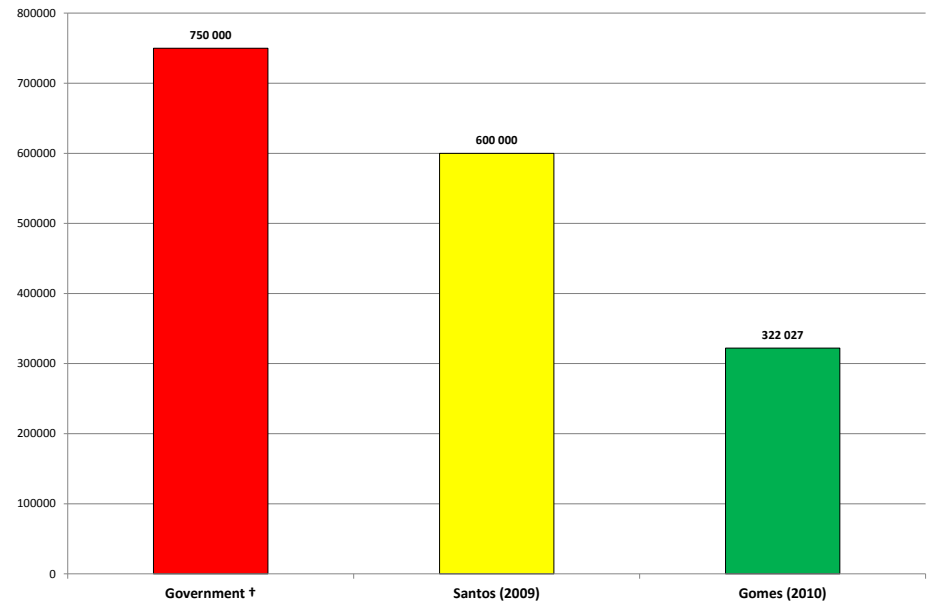
3. The policy push



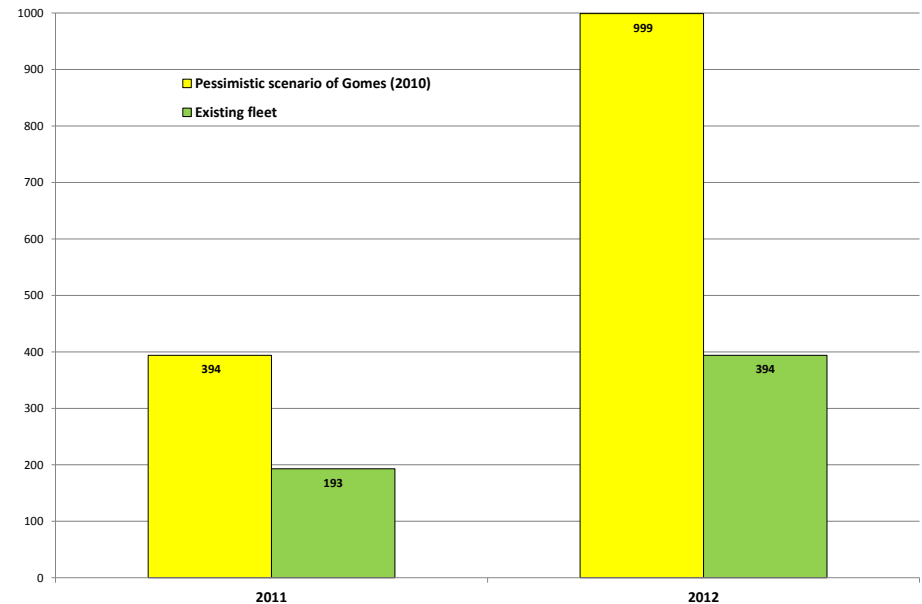
3. The policy push



Optimistic scenarios for electric vehicles fleet in 2020



Pessimistic scenarios and existing fleet in 2011 and 2012



4. Main conclusions

In summary:

Scenarios were not used to decide

Scenarios elaborated after the decision were unreasonable

Policy decision failed to address central elements of sustainable mobility, human behaviour and users' perceptions

Mobi-E was instrumental to conquer and retain political power, like the wind and solar policies

In conclusion:

Policy design should embrace social mobilization strategies

Policy push is not sufficient to leapfrog technology development

Thank you

Nuno.Boavida@partner.kit.edu